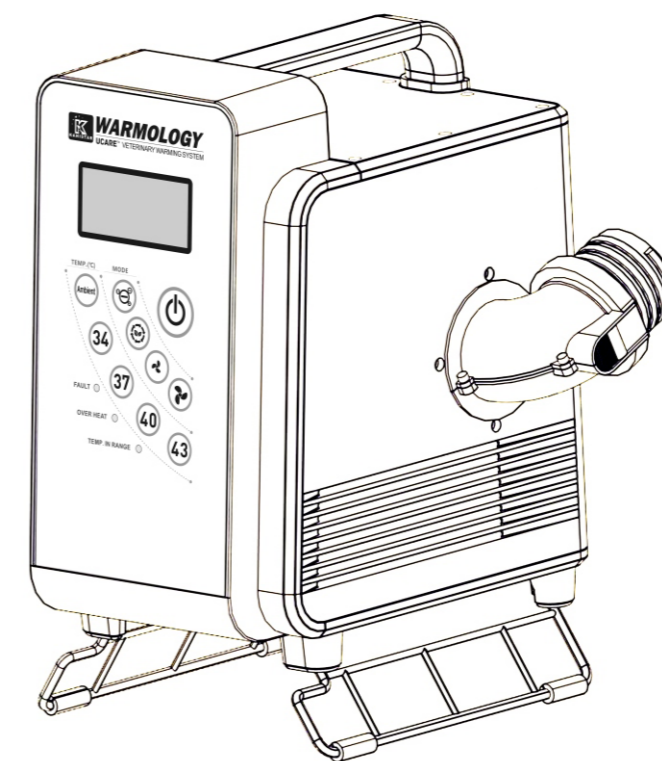


KaniStar Warmology

Model Number: WMS-1501



Dallas

11307 Indian Trail, Dallas, Texas 75229, USA.

Tel: +1 469 930 6359

Web: www.aeoluspet.com

Sydney

147 Dwyer Road, Leppington NSW 2179, Australia

Tel: +61 2 9606 4520

Singapore

150 South Bridge Road, Singapore 058727

Tel: + 65-6533 6524 / 9633 2734

Shanghai

Floor 5, Building 6, No. 675, Zhujin Road, Songjiang District, Shanghai, China.

Tel: +86-21-67632060, 67632364

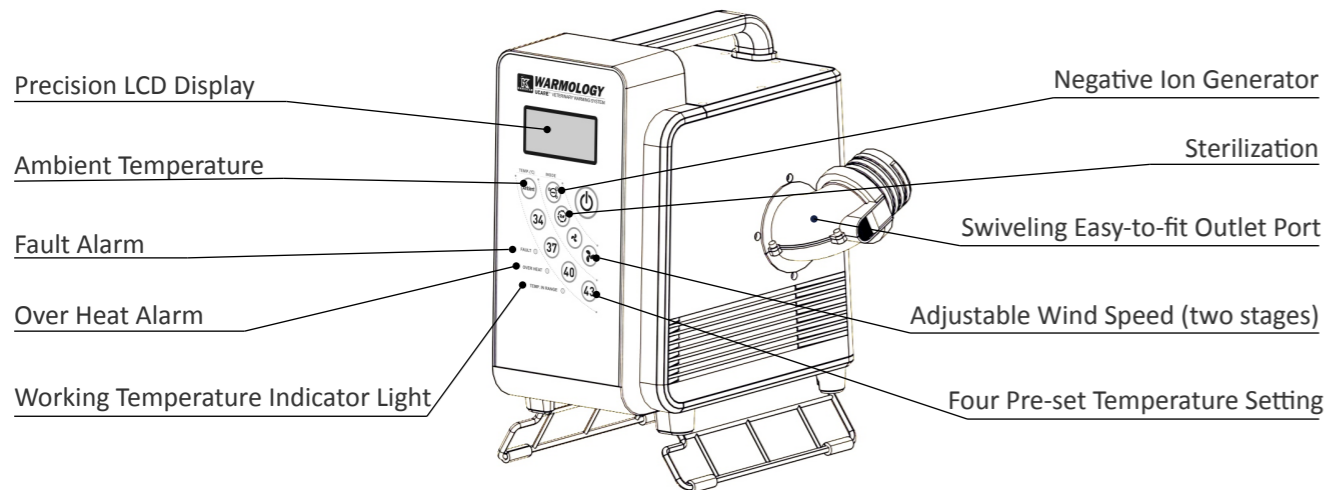
Web: www.toexpet.com

Presented by KaniStar Group

INTRODUCTION

KaniStar Warmology model number: WMS-1501 was developed for veterinary use only. Listening to the advices and suggestions from our veterinary clients, KaniStar developed the WMS-1501 with features far superior to other products in the market. Combined with KaniStar accessories, this unit is much more affordable and a higher valued product to the veterinary industry.

KANISTAR Warmology model number: WMS-1501 will provide a consistent sterilized warm atmosphere, surrounding the patient, reducing the chance of Hypothermia (resulting from the anaesthetics during surgeries).



The main heating unit offers a multitude of beneficial functions and features.

1. The operating noise level is very low. (53dB).
2. Three tiered sterilization system, 254nm ultra violet light, high concentration negative ion and 0.2µm HEPA filtering.
3. Dual detecting temperature control with 1.5 Celsius degree minus tolerance ensured. Two sensors are located at the outlet from the heat unit also at the end of the hose, detecting and compensating for heat loss from the hose.
4. Adjustable wind speed (two stages) with stable temperature control.
5. Easy to handle and maintain, smart trouble shooting system installed.
6. Accurate LCD display, real time temperature of blanket monitoring.
7. The unit can be freestanding or easily attached to our specialized stand.
8. Compact and light weighted, using little space, easy to transport.
9. Five pre-set temperatures, Ambient, 93F°(34C°), 98F°(37C°), 104F° (40C°), 109 F° (43C°).
10. Swivelling easy to fit outlet port, makes attaching the hose effortless.

QUICK START GUIDE

The day the unit is delivered, an inspection of the outer packing should be made first for any damage to the packing box.

Then the unit should be unpacked carefully, all components and the machine should be inspected for any damage.

If any damage is evident, the carrier or dealer should be notified immediately.

The manufacturer is not liable for any damage caused by a third party "transport or delivery company".

The unit should be placed in a well ventilated position and all inlets and outlets should be unobstructed. There should be a 10cm or 4-inch clearance on all sides.

Connect the air flow hose to the air outlet.

Connect the power cable to a suitable power outlet, the unit is now in standby mode.

Press and hold the sterilization button on the control panel for 3 seconds. The unit will begin sterilizing process for approximately 5 minutes, countdown

will be displayed on the LCD screen. Sterilizing can be cancelled by pressing the same button. No other function on the unit will operate during this process.

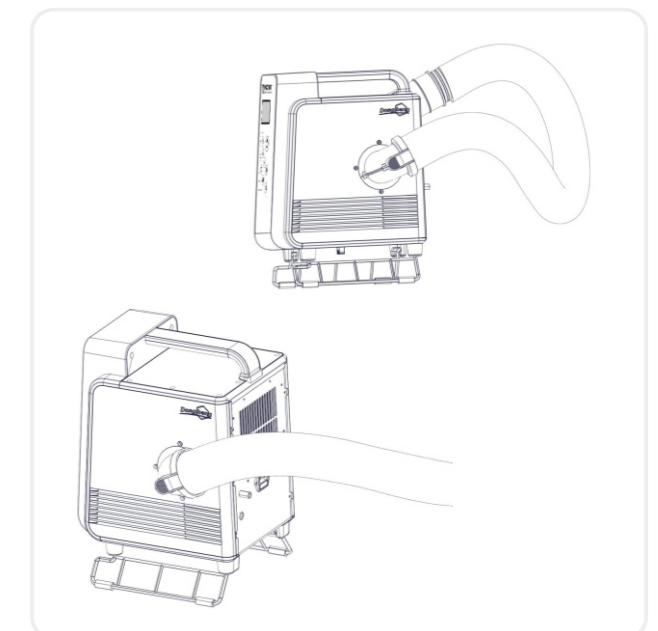
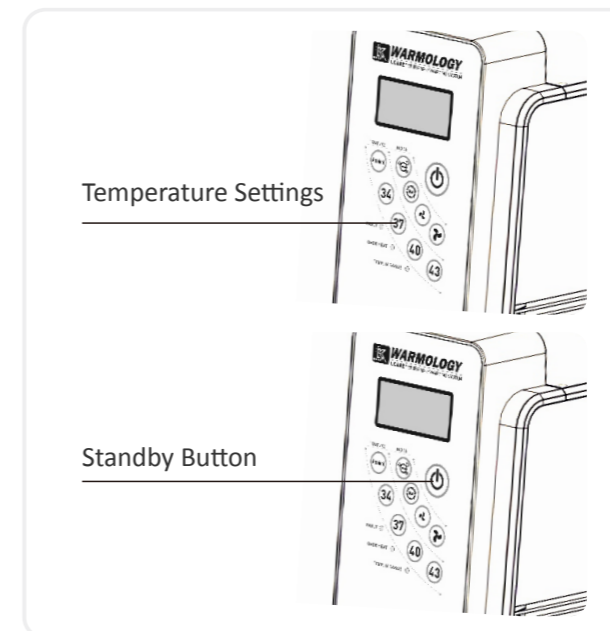
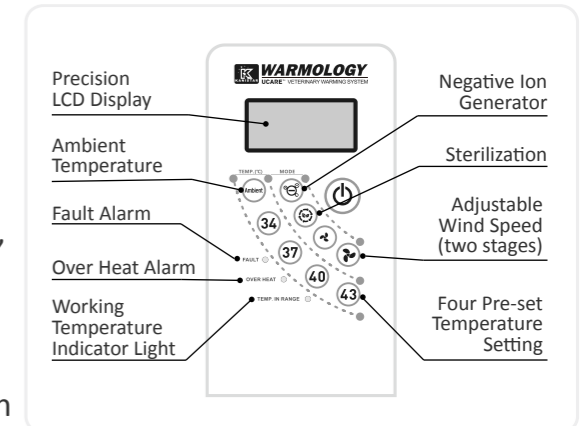
When sterilizing has concluded, the unit is ready to be used.

You can now attach the desired attachment to the hose.

The fan speed default is set at "high". Fan speed can be changed at this time.

Then select the operating temperature by choosing one of the 5 pre-set temperature buttons on the control panel to start the machine.

The LCD screen will display: current temperature (in large font), selected temperature and elapse time (in small font).



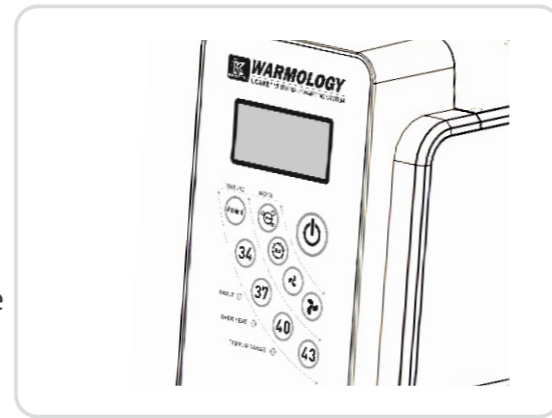
If a different temperature is selected during use, the elapse time will be reset automatically to zero. By holding the same temperature selecting button, the accumulative time will be displayed.

The green light will illuminate when the working temperature is reached.

The negative ion generator can be selected at any stage of operating from the control panel.

This will provide a sterilized air flow to the blanket.

The fan speed can be adjusted at any time.



Note: The unit will not operate correctly if the holes are not facing in the correct direction. This could result in overheating or malfunction.

Only KaniStar accessories should be used with the WMS-1501.

The unit should not be used with accessories or parts other than the manufacturer's parts or accessories.

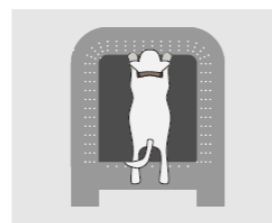
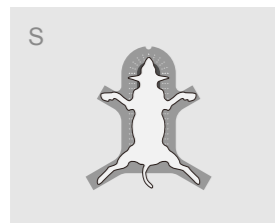
Any other supplies' parts that are used in the unit will be used at the risk of the operator.

All warranty will be void and no responsibility will be taken by KaniStar if any of the instructions are not strictly followed.

Only operated under the guidance of qualified licensed veterinarian.

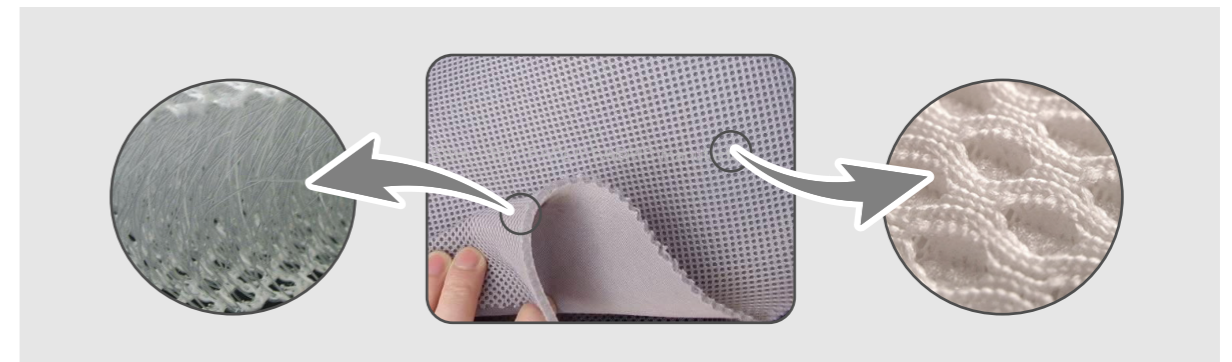
WMS-1501BD WARMOLOGY BODYSUIT (Optional Accessory)

1. The body suit fully envelops the torso and limbs. (The limb wrap is our exclusive patented system).
2. Disposable nonwoven material, very cost effective.
3. Evenly distributes heat through 3D outlets system on wrapping "suit".
4. The best choice for anaesthesia temperature management.
5. Different sizes available for small, medium and large animals.
6. Can be used with WMS-1501-BRmat to form a complete warming system.
7. Non-inflatable paw guards against thermal injury to the heat-sensitive paws and lower legs.
8. Durable and flexible materials that provide the ability to warm patients in various positions.
9. Disposable blankets are designed for single use only to create a sterilized environment and avoid cross contamination.



WMS-1501-BR WARMOLOGY MAT (Optional Accessory)

1. The best solution available for Convalescent Animal Normothermia maintenance.
2. The fabric will remain dry and warm for extended periods of treatment during ventilation and fluid transfusion. Allowing the patients to avoid the pain and discomfort of eczema, bedsores (pressure ulcers), Relieving possible irritation to the patient's skin which could cause skin problems, especially when patient's activities have been restricted in a cage where the mat or floor is wet for a longer than normal period. This mat is an ideal choice to help create a 24/7 dry and warm environment for animals. This significantly helps the healing process.
3. Made from patent pending fabric with cubic honeycomb structure, provides 3D support to the patient's body (40 points per square centimetre), filtering dirt in dense fibres.



1. Flexible, easily moulded to suit different sized animals.
2. The sterilized warm air will provide much better ventilation. Also significantly lower the risk of infection.
3. Definitely a very good choice for young animal incubation.
4. Machine washable, easy to clean, eco-friendly (SGS approved).
5. No electric hazard risk, (no electric wires are used internally), preventing possible injury from exposure to liquids and chewing.

SAFETY WARNING

All maintenance and repairs should be carried out by qualified authorized trained technicians. All animal care should be supervised by a qualified licensed veterinarian. If the unit starts to make a continuous noise, please contact an Authorized service centre. The machine housing can be wiped clean with a mild cleaning agent that is non-abrasive.

SPECIFICATIONS

| | |
|---|--|
| Dimension | 30cm×22cm×36cm (12" ×8.65" ×14") |
| Noise Level | 49dB (high speed) |
| | 43dB (low speed) |
| Filtering and sterilization | Three tiered filtering system |
| | 0.2μm HEPA filter |
| | 254nm ultraviolet sterilization light |
| Negative ion | 6×10 ⁶ Pcs/cm ³ ±10% |
| Weight | 6.14kg (13.52lbs) |
| Vent Hose | Food class, flexible, sensor inside. |
| Suggested filter replacement cycle | 2 months or over 120 hours |
| Suggested Operation Environment | Temperature: -20°C -30°C |
| Relative Humidity | 35% -80% |
| Altitude | ≤3200m |
| Warming time | 2 -8 minutes |
| Temperature Control Tolerance | ±1.0°C |
| Storage and Transportation Temperature | -10°C -45°C |

ELECTRICAL PARAMETERS

| | | | |
|------------------------|----------------|-------------------------|-------------------|
| Heating Element | PTC, 800W | Regulation | IEC60601 |
| Fan Motor | 45W | Rotational Speed | 110V /3540RPM |
| Air Volume | 110V /95CFM | | 220V /3945RPM |
| | 220V /78CFM | Rated Current | 12A (110 -120VAC) |
| Wind Pressure | 110V /26mmAq | | 8A (220 -240VAC) |
| | 220V /18mmAq | Rated Fuse | 15A (125VAC) |
| Fuse | Porcelain Fuse | | 8A (250VAC) |

TROUBLE SHOOTING

- Overheat** Once temperature exceeds $\geq 50^{\circ}\text{C}$, the red alarm light will flash and the alarm will sound, heating elements and fans will be shut down automatically, the operation panel is not workable. Unplug the power plug to allow sufficient cooling time before attempting to restart. If the problem persists, please contact your KaniStar Authorized service centres.
- Fault Alarm** The yellow light flashing and alarm sounding indicate possible malfunctions with mechanical system, fans, heater or sensor, etc. Temperature should be closely monitored until the machine can be turned off and unplugged. Wait ten minutes and restart, the machine will run self-diagnosis; if the fault light remains on, please consult your local distributor or service centre.
- Power Failure** Check that the power cable is connected. Check that the Power supply is connected. Check the fuse.

PACKING LIST

Air-conditioning Unit
 Instruction Manual
 Rubber Tubing Set
 Power Cord

WARRANTY

12 months limited warranty from the date of purchase. Warranty does not cover any misuse of the item or any damage caused directly or indirectly by the user. An extended warranty can be purchased from the distributor.